



# assco quadro 70/100

## Facade Scaffolding



LOGIC · EASY · BETTER

[www.plettac-assco.de](http://www.plettac-assco.de)

Issue 04/2013

**73 cm wide available in hot-dip galvanized steel or in aluminium 109 cm wide in hot-dip galvanized steel.**

Fully approved scaffolding system  
e. g. German Approval :  
Z-8.1-190, Z-8.1-849,  
Z-8.1-886, Z-8.1-914

With a small number of main components the scaffold can be erected quickly and safely.

The components are simply stuck together and secured by wedges.

Supplementary components complete the range of products und guarantee for every purpose a most productive and economical solution.

All items are hot-dip galvanized and manufactured for a long service life.

This catalogue gives an overview of all main- and supplementary components for the following varying systems:

**assco quadro, 73 cm wide, from hot-dip galvanized steel,**  
up to load class 3, according to EN 12811-1 (03/04), 2 kN/m<sup>2</sup>.

**assco quadro, 73 cm wide, from Aluminium,**  
up to load class 3, according to EN 12811 (03/04), 2 kN/m<sup>2</sup>.

With approved bay lengths of 1,57 m, 2,07 m, 2,57 m and 3,07 m.

**assco quadro, 109 cm wide, from hot-dip galvanized steel,**  
from load class 4 up to 6, according to EN 128811-1 (03/04), 3 kN/m<sup>2</sup> up to 6 kN/m<sup>2</sup> (according to decking and bay length).

The assco quadro facade scaffolding system is approved by the "Deutsches Institut für Bautechnik" in Berlin with the following approval numbers:

Z-8.1-190 assco quadro 70 steel,  
Z-8.1-849 assco quadro 100 steel and  
Z-8.1-886 assco quadro 70 aluminium

For additional heights or special constructions tested statical calculations are available which can be provided.

Scaffolding components have to be checked before use in terms of proper condition.

## Directory

Scaffolding example                      Page      3

### Main Components

Frames	Page	6-8
Bracing	Page	8, 9
Decks and Panels	Page	9-12
Side Protection	Page	12-18
Base Plates	Page	18

### Supplementary Components

Fall Arrest/Pedestrian Protection	Page	18-20
Side Brackets	Page	20-22
Lattice Girders, Bridges	Page	22-27
Staircases	Page	28-30
Couplers	Page	30-32
Ties	Page	32-34
Accessories	Page	34-39
Safety at work	Page	39, 40

#### Abbreviation:

H	= Height
L	= Length
W	= Width
LH	= Lift Height
BL	= Bay Length
SW	= System Width
PQ	= Package Quantity
LC	= Load Class

# Scaffolding Examples assco quadro 70 with 3,07 m Bay Length

Scaffold Length x Working Height		Description		Weight	125,87 x 8,2	61,40 x 8,2	36,84 x 8,2	18,42 x 8,2	12,28 x 8,2
Pos	Code				1032 m <sup>2</sup>	503 m <sup>2</sup>	302 m <sup>2</sup>	151 m <sup>2</sup>	101 m <sup>2</sup>
1	5F00202026	Steel Vertical Frame W73, H200		20,4	126	63	39	21	15
2	5F00701093	Steel Deck L307, B32, U-Support		20,1	246	120	72	36	24
3	5F00202365	Vertical Brace L307, H200 w. wedge Coupler		8,3	27	12	9	6	3
4	5F00202166	Guard Rail L307		5,4	196	96	57	26	19
5	5F00202213	Double End Guard Rail W73, 19 A/F		3,7	2	2	2	2	2
6	5F00205293	Toeboard L307		6,0	82	40	24	12	8
7	5F00205312	End Toeboard L73		1,6	4	4	4	4	4
8	5F00202091	Guard Rail Support W73		5,9	40	19	11	5	3
9	5F00202023	End Guard Rail Frame W73		11,6	2	2	2	2	2
10	5FS0G59006	Base Plate H40		2,9	84	42	26	14	10
11	5F00202388	Horizontal Ledger L307 w. half Couplers 48.3, 19 A/F		10,7	9	4	3	2	1
<b>Total Weight</b>					9.902 kg	4.869 kg	2.979 kg	1.554 kg	1.058 kg

1	5F00202407	Scaffold Tie with Fork L65		3,0	44	23	15	9	7
2	5FKUP10011	Normal Coupler 48.3/48.3, 19 A/F		1,0	44	23	15	9	7
3	5FDIV00107	Eyebolt 12 x 120 mm		0,2	44	23	15	9	7
4	5FDIV00105	Expansion Anchor 14mm, L 70		0,0	44	23	15	9	7
5	5FDIV00104	Plastic Cap 14 mm		0,0	44	23	15	9	7
<b>Total Weight</b>					186 kg	97 kg	63 kg	38 kg	30 kg

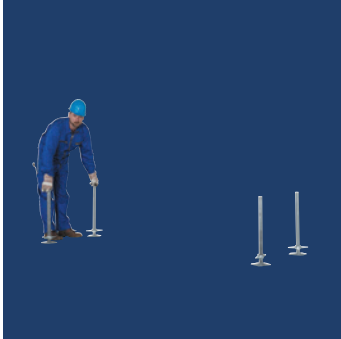
1	5F00202166	Guard Rail L307		5,4	82	40	24	12	8
2	5F00202213	Double end Guard Rail W73, 19 A/F		3,7	2	2	2	2	2
3	5F00205293	Toeboard L307		6,0	41	20	12	6	4
4	5F00205312	End Toeboard L73		1,6	2	2	2	2	2
<b>Total Weight</b>					699 kg	347 kg	212 kg	111 kg	78 kg

Access to be quoted separately.

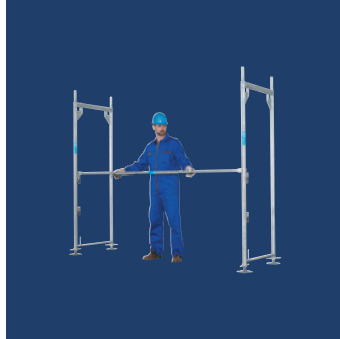
# LOGIC · EASY · BETTER

## Technical solutions that convince

Locate base jacks



Assemble vertical frame and secure with guard rail



Add vertical brace and deck

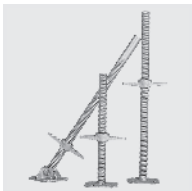


Fit horizontal ledger and level out scaffolding bay



### Casted instead of tin

The kept, casted wedge to fix the guard rail guarantees a quick and efficient process of assembly. Wedge and wedge pocket are especially designed to avoid wearing out. At the aluminium frame the casted wedge housing without corners and sharp edges indicates the relief of the stress. Reserves for the supportable loads are the result of these improvements.



### Our dimensions:

**Bay width:** 0,73 m, 1,09 m

**Bay length:** 0,73 m, 1,09 m, 1,40 m, 1,57 m, 2,07 m, 2,57 m, 3,07 m



### Functional versatility

If you want to deal with all your various scaffolding projects economically, you also need a range of decks as wide as possible. The ascco quadro facade scaffolding can offer the optimal decking for each scope of work and for each scaffolding project: Robust, hot-dip galvanized steel decks or light aluminium frame decks with aluminium or plywood surface.



For balancing different terrain we can offer frames with intermediate heights 0,66 m, 1,0 m and 1,5 m to be combined with the 2 m high standard frames.



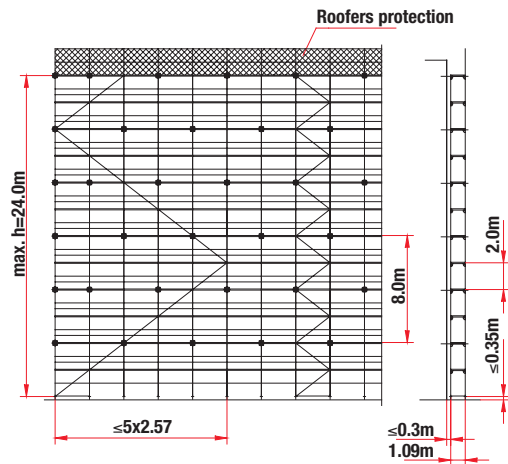
**Longer-wider-shorter**

For the extension of the scaffolding we offer side brackets with width of 109, 73, 50 and 36 cm. Balconies, corners etc. can be built around without any problems.



**Safe load transmission**

Two or three claws from steel or aluminium at the ascco decking indicate a safe transmission of the internal and external loads. At the same time horizontal stiffness of the scaffolding is generated. This gives the benefit of a staggered tie pattern.





**Steel Vertical Frame quadro**

The U-profile on the top of the frame is supporting the decks. Guard rails or double guard rails are fixed by wedges. The vertical frames are available in different widths and heights. The steel tubes are Ø 48,3 mm.

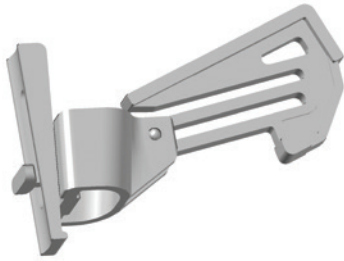
**Steel Vertical Frame quadro W73 light**



Code	Dimensions [cm]	Weight [kg]	PQ
5F00202029	66 H x 73 B	10,5	24
5F00202028	100 H x 73 B	13,4	24
5F00202027*	150 H x 73 B	16,7	24
5F00202026	200 H x 73 B	20,4	24

**Quick Lock Wedge Pocket**

for steel vertical frames quadro W73 light



Code	Dimensions [cm]	Weight [kg]
5F00202031		0,6

**Steel Vertical Frame quadro W109**



Code	Dimensions [cm]	Weight [kg]	PQ
5F00202013	66 H x 109 B	12,9	24
5F00202014	100 H x 109 B	16,2	24
5F00202007*	150 H x 109 B	19,8	24
5F00202015	200 H x 109 B	23,2	24

**Steel Vertical Frame quadro W36 light**



Code	Dimensions [cm]	Weight [kg]	PQ
5F00202018	200 H x 36 B	17,8	24

## Alu Vertical Frame quadro

The U-profile on the top of the frame is supporting the decks. Guard rails or double guard rails are fixed by wedges. The vertical frames are available in different heights. The width of alu frames is 73 cm. The aluminum tubes are  $\varnothing$  48,3 mm.

### Alu Vertical Frame quadro W73

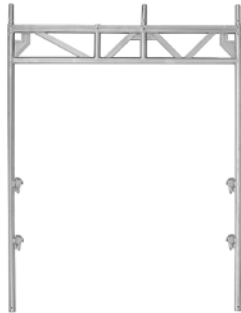


Code	Dimensions [cm]	Weight [kg]	PQ
<b>5F00203010</b>	66 H x 73 B	4,6	24
<b>5F00203011</b>	100 H x 73 B	6,1	24
<b>5F00203012</b>	200 H x 73 B	9,4	24

## Walk Through Frame quadro

Provides protection to pedestrians under an erected scaffold. The stiffness in horizontal direction will be realized by steel tubes and couplers, guard rails and ledgers. The 150 cm wide unit will be produced with 2 wedge pockets as opposed to the 175 cm wide one containing 4 wedge pockets.

### Walk Through Frame quadro



Code	Dimensions [cm]	Weight [kg]	PQ
<b>5F00202195</b> 4-deck	200 H x 150 B	33,4	12
<b>5F00202197</b> 5-deck	200 H x 175 B	39,6	12

## Fall arrest frame quadro

The steel fall arrest frame allows an easy widening of the scaffold outward to the formation of fall arrest scaffoldings relating to buildings with an roof overhang. You can also use it as an inside bracket, alternatively as a junction from quadro 70 to quadro 100.

### Fall arrest frame quadro



Code	Dimensions [cm]	Weight [kg]	PQ
<b>5F00208000*</b>	200 H x 73/109 B	22,7	25

## Side Bracket Frame quadro

To scaffold round limited obstructions e.g. balconys. The offset of the tube is 32 cm.

### Side Bracket Frame quadro W73

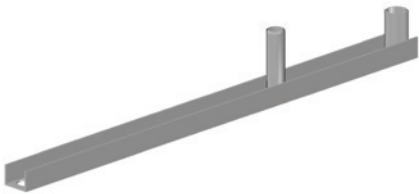


Code	Dimensions [cm]	Weight [kg]	PQ
<b>5F00202019</b>	200 H x 73 B	23,8	24

## Adapter quadro

The adapter quadro allows the quadro 70- scaffold to be erected on top of the quadro 100.

### Adapter quadro W109



Code	Dimensions [cm]	Weight [kg]
<b>5F00202032</b>	109 B	6,4

## Bracing

### Vertical Brace quadro

The lengths of the vertical braces suit to the scaffold bay lengths and heights. The bracing, once fitted, guarantees a perpendicular erection of the scaffold. The arrangement has to be designed according to the relevant assembly guide.

### Vertical Brace quadro w. Wedge Coupler



Code	Dimensions [cm]	Weight [kg]	PQ
<b>5F00202362</b> for bays 157x200 cm w. 2 Wedge Couplers	240 L	6,7	50
<b>5F00202363</b> for bays 207 x 200 cm	280 L	6,6	50
<b>5F00202364</b> for bays 257 x 200 cm	320 L	7,4	50
<b>5F00202365</b> for bays 307 x 200 cm	360 L	8,3	50



## Cross Brace

The cross brace supports brackets and reinforces vertical frames. With 2 swivel half couplers 19 or 22 A/F.

### Cross Vertical Brace



Code	Dimensions [cm]	Weight [kg]	PQ	Preis
<b>5F00202366</b> 19 A/F	170 L	4,9	50	
<b>5FSNN09000</b> 22 A/F	194 L	7,6	50	

## Horizontal Ledger

Necessary to reinforce the foot lift of all bays braced vertically.

### Horizontal Ledger quadro



Code	Dimensions [cm]	Weight [kg]	PQ
<b>5F00202386</b>	207 L	7,6	50
<b>5F00202387</b>	257 L	9,1	50
<b>5F00202388</b>	307 L	10,7	50

## Decks and Panels

### Steel Deck U-Support

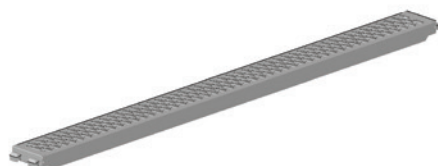
The easy to handle perforated steel decks are extremely non-skid and safe. Depending on the length the max. capacity of these decks is load class 6. The decks should be checked before use. The 19 cm steel filler decks will be used to close gaps at wider bays.

### Steel Deck quadro W32



Code	Dimensions [cm]	Weight [kg]	LC	PQ
<b>5F00701088</b>	7,6 H x 73 L	5,9	6	39/52
<b>5F00701089</b>	7,6 H x 109 L	8,1	6	39/52
<b>5F00701094*</b>	7,6 H x 140 L	10,0	6	39/52
<b>5F00701090</b>	7,6 H x 157 L	11,0	6	39/52
<b>5F00701091</b>	7,6 H x 207 L	14,0	6	39/52
<b>5F00701092</b>	7,6 H x 257 L	17,1	5	39/52
<b>5F00701093</b>	7,6 H x 307 L	20,1	4	39/52
<b>5F00702094*</b>	7,6 H x 414 L	29,3	3	39/52

## Steel Deck quadro W19

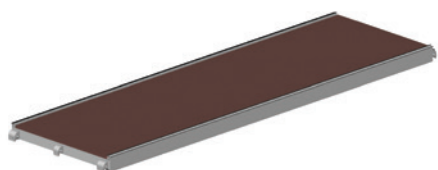


Code	Dimensions [cm]	Weight [kg]	LC	PQ
5F00702100	7,8 H x 109 L	6,6	6	60
5F00702101	7,8 H x 157 L	8,8	6	60
5F00702102	7,8 H x 207 L	11,1	6	60
5F00702103	7,8 H x 257 L	13,4	5	60
5F00702104	7,8 H x 307 L	15,7	4	60

## Alu Frame Deck U-Support

Frame Deck SL with full aluminium surface or high-quality, molder-resistant and water-proof plywood surface according to BFU 100 G. Alu frame with solid aluminium claws for U-support. The decks should be checked before use.

## Alu Frame Deck quadro W61 w. Plywood Surface

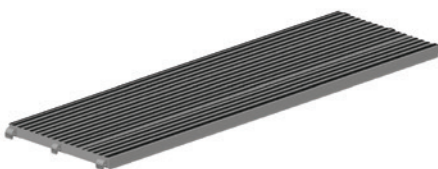


Code	Dimensions [cm]	Weight [kg]	LC	PQ
5F00703145*	7,3 H x 73 L	6,1	3	10
5F00703146*	7,3 H x 109 L	8,4	3	10
5F00703147*	7,3 H x 157 L	11,9	3	10
5F00703148	7,3 H x 207 L	15,5	3	10
5F00703149	7,3 H x 257 L	18,7	3	10
5F00703150	7,3 H x 307 L	24,0	3	10

## Alu Deck U-Support

Aluminium extrusion profile with aluminium connecting claws for U-support. Width = 61 cm.

## Alu Deck Protec W61, U-Support, non-perforated



Code	Dimensions [cm]	Weight [kg]	LC	PQ
5F00703390	5,4 H x 73 L	6,4	6	30
5F00703391	5,4 H x 109 L	8,9	6	30
5F00703392*	5,4 H x 140 L	11,0	6	30
5F00703393	5,4 H x 157 L	12,2	6	30
5F00703394	5,4 H x 207 L	15,7	6	30
5F00703395	5,4 H x 257 L	19,2	5	30
5F00703396	5,4 H x 307 L	22,7	4	30

## Alu Access Deck U-Support

Access deck U-support with full aluminium surface or high-quality, molder resistant and water-proof plywood surface according to BFU 100 G. Alu frame with solid aluminium claws for U-Support. Available with integral or separate ladder. The decks should be checked before use.

### Alu Access Deck quadro W61 w. Plywood Surface and Ladder



Code	Dimensions [cm]	Weight [kg]	LC	PQ
5F00703151	7,3 H x 257 L	23,3	3	10
5F00703152	7,3 H x 307 L	28,5	3	10

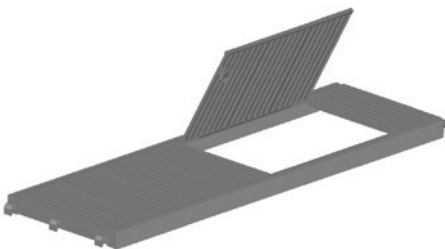
### Alu Access Deck quadro W61 w. Plywood Surface w/o Ladder

can be combined with internal ladder quadro



Code	Dimensions [cm]	Weight [kg]	LC	PQ
5F00703249*	7,3 H x 157 L	12,2	3	10
5F00703250*	7,3 H x 207 L	16,0	3	10
5F00703251	7,3 H x 257 L	19,1	3	10
5F00703252	7,3 H x 307 L	24,4	3	10

### Alu Access Deck quadro W64 w. Alu Surface w/o Ladder



Code	Dimensions [cm]	Weight [kg]	LC	PQ
5F00703610*	8,1 H x 207 L	17,0	4	10

### Alu Access Deck quadro W61 w. Alu Surface and Ladder



Code	Dimensions [cm]	Weight [kg]	LC	PQ
5F00703611	8,1 H x 257 L	23,5	4	10
5F00703612	8,1 H x 307 L	27,0	3	10

## Internal Ladder quadro

A separate ladder with hooks for the internal ladder access in combination with alu access deck w/o ladder.

### Steel Internal Ladder quadro

for 1 lift



Code	Dimensions [cm]	Weight [kg]	PQ
5F00512105	35 B x 215 L	9,0	25

### Alu Internal Ladder quadro

for 1 lift



Code	Dimensions [cm]	Weight [kg]	PQ
5F00513600	35 B x 215 L	4,1	25

## Side Protection

### Guard Rail quadro

The guard rails act as side protection and are connected to the frames by wedges.

### Guard Rail quadro

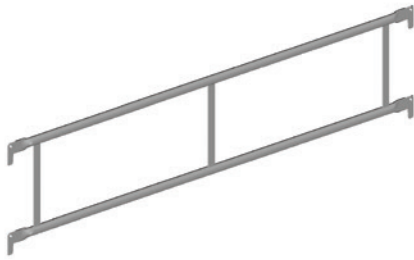


Code	Dimensions [cm]	Weight [kg]	PQ
5F00202167	73 L	1,5	56
5F00202162	109 L	2,1	56
5F00202163	157 L	2,9	56
5F00202164	207 L	3,8	56
5F00202165	257 L	4,6	56
5F00202166	307 L	5,4	56

## Double Guard Rail quadro

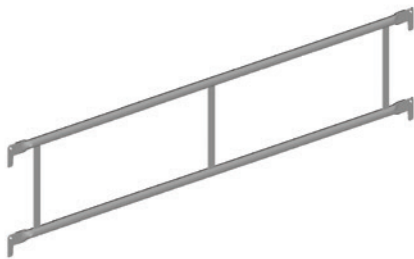
The double guard rails provide greater rigidity to the scaffold. They are replacing two single guard rails each. They are also fixed and secured by wedges.

### Steel Double Guard Rail quadro



Code	Dimensions [cm]	Weight [kg]	PQ
5F00202185	157 L	7,1	20
5F00202186	207 L	8,8	20
5F00202187	257 L	11,1	20
5F00202188	307 L	12,8	20
5F00202184*	414 L	17,1	20

### Alu Double Guard Rail quadro



Code	Dimensions [cm]	Weight [kg]	PQ
5F00203220	157 L	3,4	25
5F00203221	207 L	4,2	25
5F00203222	257 L	5,0	25
5F00203223	307 L	5,8	25

## Double End Guard Rail

The double end guard rails act as side protection and close the head end of scaffold.

### Double End Guard Rail quadro



Code	Dimensions [cm]	Weight [kg]	PQ
5F00202215*	43 H x 36 B	3,2	30
5F00202213	43 H x 73 B	3,7	30
5F00202212	43 H x 109 B	4,6	30

## Toeboard quadro

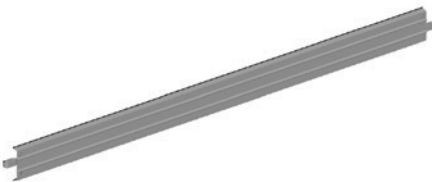
Toeboards are fitted at platform height and complete the required three part side protection. They are connected to toeboard pins welded to the lower transom of the quadro frame. Height = 15 cm.

### Timber Toeboard for quadro Decks



Code	Dimensions [cm]	Weight [kg]	PQ
5F00205288	15 H x 73 L	1,6	70
5F00205289	15 H x 109 L	2,3	70
5F00205290	15 H x 157 L	3,2	70
5F00205291	15 H x 207 L	4,1	70
5F00205292	15 H x 257 L	5,1	70
5F00205293	15 H x 307 L	6,0	70
5F00205294*	15 H x 414 L	8,1	70

### Steel Toeboard for quadro Decks



Code	Dimensions [cm]	Weight [kg]	PQ
5F00205388	15 H x 73 L	2,2	70
5F00205389	15 H x 109 L	3,1	70
5F00205390	15 H x 140 L	3,9	70
5F00205391	15 H x 157 L	4,4	70
5F00205392	15 H x 207 L	5,7	70
5F00205393	15 H x 257 L	7,0	70
5F00205394	15 H x 307 L	8,3	70

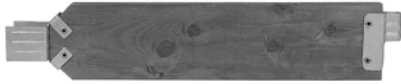


## Safety Gate

Enables safe access to scaffold bays where external ladder access has to be assembled.

### End Toe Board quadro

End Toe Boards quadro are fitted at platform height and complete the required three part side protection



Code	Dimensions [cm]	Weight [kg]
<b>5F00205311*</b>	15 H x 36 L	0,9
<b>5F00205312</b>	15 H x 73 L	1,6
<b>5F00205313</b>	15 H x 109 L	2,2

## Top Level Protection quadro

The top level is protected by guard rail posts and upper deck retainers or by guard rail supports. The ends are closed by end guard rail frames.

### Guard Rail Post quadro w. toeboard pin



Code	Dimensions [cm]	Weight [kg]	PQ
<b>5F00202085</b> of steel	100 H	5,3	36
<b>5F00203084</b> of aluminium	100 H	2,4	36

### Guard Rail Post quadro w/o toeboard pin



Code	Dimensions [cm]	Weight [kg]	PQ
<b>5F00712023*</b> of aluminium	100 H	2,2	36

### Upper Deck Retainer quadro



Code	Dimensions [cm]	Weight [kg]
5F00202105*	36 B	1,0
5F00202106	73 B	1,9
5F00202107*	109 B	2,7

### Steel Guard Rail Support quadro light



Code	Dimensions [cm]	Weight [kg]	PQ
5F00202091	100 H x 73 B	5,9	24
5F00202092	100 H x 109 B	6,9	24

### Steel Guard Rail Support quadro light w. Connection Spigot



Code	Dimensions [cm]	Weight [kg]	PQ
5F00202089	100 H x 73 B	6,5	24
5F00202090	100 H x 109 B	7,6	24

### Alu Guard Rail Support quadro



Code	Dimensions [cm]	Weight [kg]	PQ
5F00203083	100 H x 73 B	3,0	24

### Top End Guard Rail Frame quadro light

w. 2 Wedge Pockets



Code	Dimensions [cm]	Weight [kg]	PQ
5F00202023	100 H x 73 B	11,6	12
5F00202024	100 H x 109 B	13,6	12

### Top End Guard Rail Frame quadro light w. Connection Spigot

w. 2 Wedge Pockets



Code	Dimensions [cm]	Weight [kg]	PQ
5F00203023	100 H x 73 B	12,8	12
5F00203024	100 H x 109 B	14,7	12

### Alu Top End Guard Rail Frame quadro

w. 2 Wedge Pockets



Code	Dimensions [cm]	Weight [kg]	PQ
5F00203080	100 H x 73 B	5,3	24

## Base Plates

### Base Plate

A number of base plates in various lengths are available to compensate uneven scaffold foundations. The base plates thread is rounded to allow the wing nut to be quickly screwed up or down, whilst also making cleaning easier. It is important to note that 25 % of the base plates length or at least 15 cm should always be in the scaffold standard.

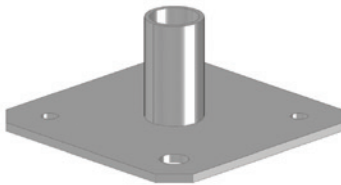
### Base Plate

tubular spindle with round thread fitted with wing nut and 15x15 cm base plate



Code	Dimensions [cm]	Weight [kg]	PQ
5FSOG59006	40 H	2,9	250
5FSOG59007	60 H	3,6	200
5FSOG59008	80 H	4,3	200
5FSOG60000 tilting	78 H	6,0	200

### Base Plate w/o Vertical Adjustment



Code	Dimensions [cm]	Weight [kg]
5FSOG48000	15 B x 15 L	1,1

## Fall Arrest / Pedestrian Protection

### Head Fan quadro

To provide safety to traffic along the scaffold head fans quadro are available. The area is closed by steel decks or alu frame decks. The head fan is cantilevering 134 cm.

### Head Fan Side Bracket quadro



Code	Dimensions [cm]	Weight [kg]
5F00202198	134 B	18,6

### Weather Protection Post quadro



Code	Dimensions [cm]	Weight [kg]
5F00202200*	260 H	13,2

### Weather Protection Top End Frame



Code	Dimensions [cm]	Weight [kg]
5FA0717900*	87 H x 73 B	10,9

### Fall Arrest

For assembling fall arrest scaffolds the supports are to be fixed on top level and connected with the fall arrest mesh panels. Safety nets used with guard rails instead of mesh panels are alternatively available. In that case the nets have to be secured by using snap buckles to the upper and lower guard rails. The recommended distance between the snap buckles is 75 cm.

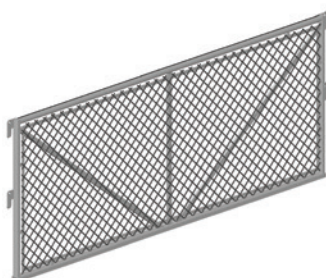
### Support quadro for Fall Arrest Mesh Panel

with 5 wedge pockets



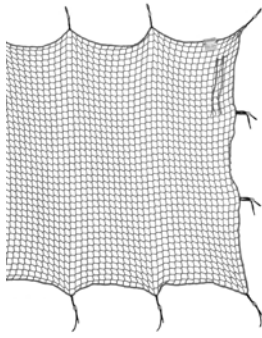
Code	Dimensions [cm]	Weight [kg]	PQ
5F00202281	200 H x 73 B	12,6	12
5F00202282	200 H x 109 B	13,8	12

### Fall Arrest Mesh Panel quadro



Code	Dimensions [cm]	Weight [kg]	PQ
5F00202110*	100 H x 157 L	17,0	20
5F00202111*	100 H x 207 L	21,7	20
5F00202112*	100 H x 257 L	25,3	20
5F00202113*	100 H x 307 L	28,9	20

## Safety Net



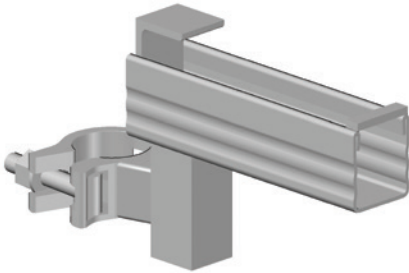
Code	Dimensions [cm]	Weight [kg]
<b>5FPLA01900</b> mesh size 45, w/o snap buckle	1.000 B x 200 L	8,9
<b>5FPLA01912</b> mesh size 45, w. snap buckle	1.000 B x 200 L	9,8
<b>5FPLA01902</b> mesh size 100, w/o snap buckle	1.000 B x 200 L	4,7
<b>5FPLA01916</b> mesh size 100, w. snap buckle	1.000 B x 200 L	5,5
<b>5FPLA02121</b> snap buckle supplied separately		

## Side Brackets

### Side Bracket U-Support

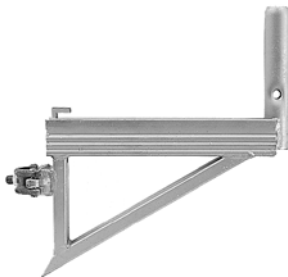
To support quadro or futuro decks support with an integrated brace to extend the scaffold.

#### Side Bracket quadro W22 for steel decks W19



Code	Dimensions [cm]	Weight [kg]	PQ
<b>5F00202221</b> 19 A/F	22 B	2,1	40

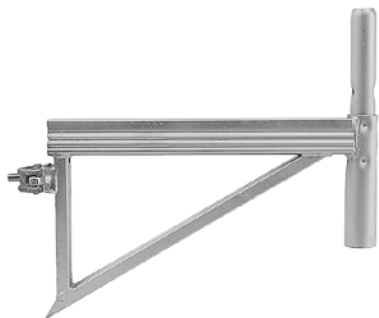
#### Side Bracket quadro W36



Code	Dimensions [cm]	Weight [kg]	PQ
<b>5F00202220</b>	36 B	3,6	40
<b>5F00202235</b> w/o Connecting Spigot	36 B	2,6	40

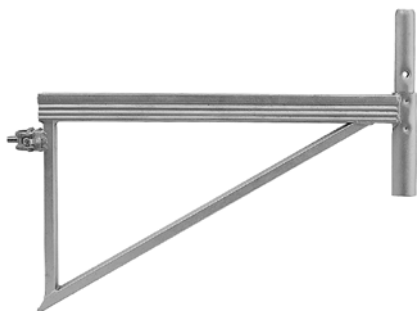


### Side Bracket quadro W50



Code	Dimensions [cm]	Weight [kg]	PQ
<b>5F00202218</b> w. Connection Spigot, 19 A/F	50 B	5,1	20

### Side Bracket quadro W73



Code	Dimensions [cm]	Weight [kg]	PQ
<b>5F00202222</b> w. Connecting Spigot, 19 A/F	73 B	6,8	20

### Side Bracket quadro W109

to be used with static approval and cross vertical brace only



Code	Dimensions [cm]	Weight [kg]	PQ
<b>5F00202219*</b> w. Connecting Spigot, 19 A/F	109 B	11,4	20

### Variable Bracket quadro, 1-deck, 2-decks



Code	Dimensions [cm]	Weight [kg]	PQ
<b>5F00202234*</b> w/o Connecting Spigot, 19 A/F	32 H x 64 B	4,9	20

## Cantilever Platform quadro

The cantilever platform allows the extension of the working platform by 20 cm towards the facade without using brackets additionally. The decks are attached to the standards and if necessary they can be parked at the outside of the quadro scaffold without changing the main-scaffolding. The cantilever platforms are secured by using pig tail pins. Applicable in combination with steel frames.

### Cantilever Platform quadro



Code	Dimensions [cm]	Weight [kg]	LC
<b>5F00705503</b>	20 B x 157 L	8,6	3
<b>5F00705502</b>	20 B x 207 L	10,7	3
<b>5F00705501</b>	20 B x 257 L	12,9	3
<b>5F00705500</b>	20 B x 307 L	15,0	3

## Lattice Girders, Bridges

### Bridging Beam quadro

Lattice girders quadro with spans up to 771 cm for bridging 2-3 scaffold bays. The tube connectors at the upper chord allow an easy connection of frames for the next lift.

### Bridging Beam quadro

axle distance 40 cm, height 45 cm, steel tube Ø 48,3 mm

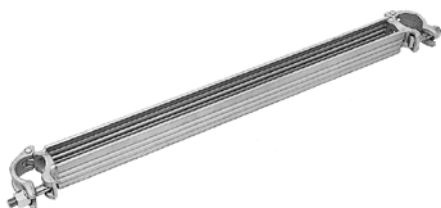


Code	Dimensions [cm]	Weight [kg]	PQ
<b>5F00602280</b>	514 L	51,1	10
<b>5F00602285</b>	614 L	60,1	10
<b>5F00602290*</b>	771 L	78,1	10

### Adapter for Intermediate Heights quadro

Used to assemble quadro decks combined with quadro lattice girders and for different heights at the vertical frame. U-Profile with welded half couplers 19 A/F.

### Adapter for Intermediate Heights quadro

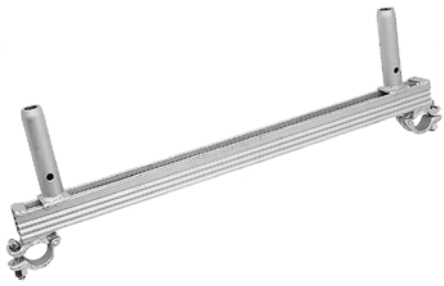


Code	Dimensions [cm]	Weight [kg]
<b>5F00202036</b> for vertical frame quadro W73	73 B	3,6
<b>5F00202037</b> for vertical frame quadro W109	109 B	4,9

## Intermediate Transom for Lattice Girder

Used to assemble decks and frames at lattice girder bridges and system free lattice girders. U-Profile with welded half coupler 19 A/F and tube connection spigots.

### Intermediate Transom for Lattice Girder



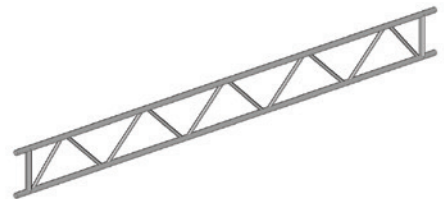
Code	Dimensions [cm]	Weight [kg]
5F00202038	73 W	5,2
5F00202039	109 W	8,4

## Steel Lattice Girder

Lattice girders in lengths up to 820 cm for bridging spans, cantilevering out, designing platforms and other special applications. Connection to scaffold by means of double couplers only. Reinforcing braces are fixed in distances of 50 cm. Height = 45 cm.

### Steel Lattice Girder H40

axle distance 40 cm, height 45 cm, steel tube Ø 48,3 mm, loading tables on demand, girders may be extended using connection spigots



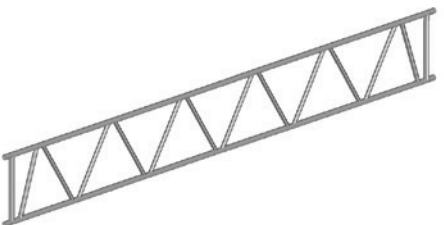
Code	Dimensions [cm]	Weight [kg]	PQ
5FSOG84500	40 H x 320 L	30,3	10
5FSOG84501	40 H x 420 L	39,2	10
5FSOG84502	40 H x 520 L	48,2	10
5FSOG84503	40 H x 620 L	57,1	10
5FSOG84504	40 H x 770 L	71,2	10
5FSOG84505	40 H x 820 L	75,7	10

## Heavy Load Lattice Girder

Lattice girders in lengths of up to 700 cm. Similar design to the normal lattice girder but with a bigger height to enable the beam to carry more load. The heavy load lattice girders form the main support for the plettac modular roof. Height = 75 cm.

### Heavy Duty Lattice Girder H70

axle distance 70 cm, height 75 cm, steel tube Ø 48,3 mm, loading tables on demand, girders may be extended using connection spigots



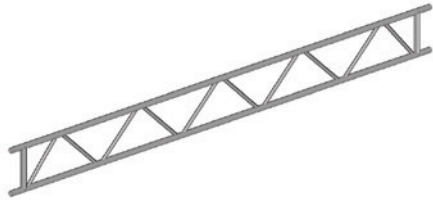
Code	Dimensions [cm]	Weight [kg]	PQ
5FMOD06500	70 H x 300 L	33,4	10
5FSOG35003	70 H x 400 L	43,1	10
5FSOG35002	70 H x 500 L	52,9	10
5FSOG35001	70 H x 600 L	62,6	10
5FSOG35000	70 H x 700 L	73,2	10

## Alu Lattice Girder

Same as steel lattice girder but aluminium. Height = 45 cm.

### Alu Lattice Girder H40

axle distance 40 cm, height 45 cm, aluminium tube  $\varnothing$  48,3 mm, loading tables on demand, girders may be extended using connection spigots



Code	Dimensions [cm]	Weight [kg]	PQ
<b>5FSOG85000</b>	40 H x 320 L	12,6	10
<b>5FSOG85001</b>	40 H x 420 L	16,3	10
<b>5FSOG85002</b>	40 H x 520 L	19,9	10
<b>5FSOG85003</b>	40 H x 620 L	23,6	10
<b>5FSOG85004</b>	40 H x 770 L	29,4	10
<b>5FSOG85005</b>	40 H x 820 L	31,2	10

## Alu Decking Rail U-Support

The alu decking rails U-support are fitted to the length of the lattice girders to create flat working areas with standard decks.

### Alu Decking Rail quadro w. Half Couplers

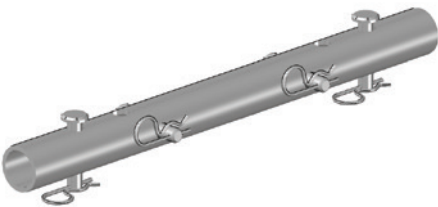


Code	Dimensions [cm]	Weight [kg]
<b>5F00606301*</b> 19 A/F	300 L	7,3
<b>5F00606401*</b> 19 A/F	400 L	9,5
<b>5F00606501*</b> 19 A/F	500 L	11,7
<b>5F00606601*</b> 19 A/F	600 L	13,9

## Connecting Spigot for Lattice Girder

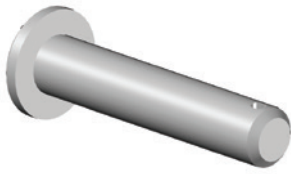
These connection spigots are used to extend or connect lattice girders. Two spigots are required to form a butt joint. The spigots are inserted inside the tube ends and are secured using 4 bolts with spring clips. Alternative use of special bolt with self securing nut is possible. Curved connection spigots are available to form a ridge joint for roof constructions.

### Connecting Spigot Straight for Lattice Girder



Code	Dimensions [cm]	Weight [kg]
<b>5FSOG02101</b> inclusive 4 connection bolts and spring clips per spigot		2,2

### Bolt Ø 12 mm for Connection Spigot for Lattice Girder



Code	Dimensions [mm]	Weight [kg]
3ZBOL01200	60 L	0,1

### Circlip Ø 3,2 mm for Connection Spigot for Lattice Girder



Code	Dimensions [mm]	Weight [kg]
3ZFED10007	10 L	

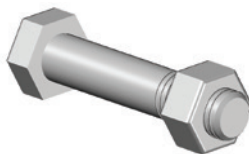
### Connecting Spigot Curved for Lattice Girder

inclusive 4 connection bolts and spring clips per spigot for lattice girder H40 to create a 10° pitch



Code	Dimensions [cm]	Weight [kg]
<b>5FSOG41000</b> formed for the upper chord		3,5
<b>5FSOG41001</b> formed for the lower chord		2,8

### Bolt M 12 x 70 w. Nut



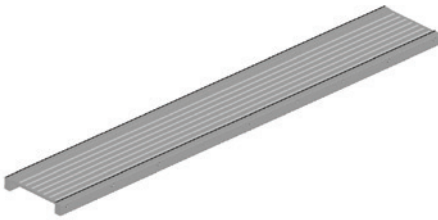
Code	Dimensions [cm]	Weight [kg]
3ZSES01203		0,1

## Alu Bridge

Aluminium bridges with a lengths of up to 10 m are designed for bridging spans and to build ceiling scaffolds. Post brackets are available for use with guard rail posts, system guard rails and toeboards to provide the necessary three part side protection. The requirements per railing connection are: 1 guard rail post, 1 post bracket, 1 tie rod, 2 wing nuts. The aluminium bridge must be secured against lifting. It is not permitted to continue scaffold off aluminium bridges.

### Alu Bridge

2,0 kN/m<sup>2</sup> capacity. Bridges longer than 616 cm: 1,5 kN/m<sup>2</sup> capacity



Code	Dimensions [cm]	Weight [kg]	PQ
<b>5FSOG74004</b>	60 B x 412 L	23,9	5
<b>5FSOG74003</b>	60 B x 512 L	27,5	5
<b>5FSOG74002</b>	60 B x 612 L	39,1	5
<b>5FSOG74001</b>	60 B x 812 L	66,1	5
<b>5FSOG74000</b>	60 B x 1012 L	82,2	5

### Post Bracket



Code	Dimensions [cm]	Weight [kg]
<b>5FSOG46000</b>		1,2

### Tie Rod



Code	Dimensions [cm]	Weight [kg]
<b>7FAST08000</b> 80 for 1 aluminium bridge	80 L	1,2
<b>7FAST14000</b> 140 for 2 aluminium bridges	140 L	2,0
<b>7FAST20000</b> 200 for 3 aluminium bridges	200 L	2,9

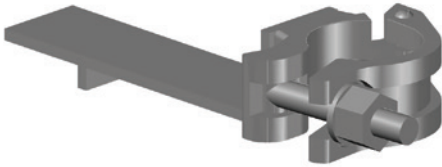


## Wing Nut



Code	Dimensions [cm]	Weight [kg]	Preis
5FFLM10001		0,4	3,75

## Deck Retainer



Code	Dimensions [cm]	Weight [kg]
5FKUP45502		1,0

## Special Post Bracket

allows a system independent arrangement of guard rails. Made up of:



Code	Dimensions [cm]	Weight [kg]
5F00491001	122 L	2,0
guard rail post		
5F00491002		0,4
post clip		
5F00491003		0,4
clip		

### Alu Staircase U-Support

Designed for external scaffold access without reducing the working space. Full aluminium staircase with anti-slip surface and upper and lower landings. Head connectors for U-transoms. Width = 65 cm, load capacity 2,0 kN/m<sup>2</sup>.

#### Alu Staircase quadro H200, 2 kN

for system height 200 cm



Code	Dimensions [cm]	Weight [kg]	PQ
<b>5F00203320</b>	200 H x 257 L	23,1	10
<b>5F00203321</b>	200 H x 307 L	27,5	10
<b>5F00203322</b>	100 H x 122 L	16,8	10

### Guard Rail

Steel guard rails for the aluminium staircases.

#### Stair Head Guard Rail

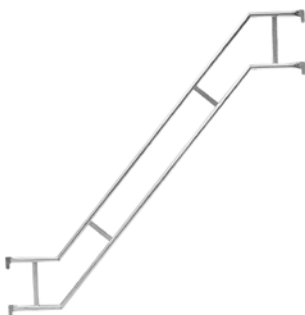
Matching for all types of aluminium stairs



Code	Dimensions [cm]	Weight [kg]
<b>5FSLN00600</b>	200 H	14,7
<b>5FSLN00601</b>	100 H	11,3

#### Outer Guard Rail Double quadro for Alu Staircase

fixed to wedge pockets



Code	Dimensions [cm]	Weight [kg]	PQ
<b>5F00203313</b> for system length 257 cm	200 H	15,7	20
<b>5F00203314</b> for system length 307 cm	200 H	17,5	20

## Inner Guard Rail Double for Alu Staircases H200

Matching for all types of aluminium stairs



Code	Dimensions [cm]	Weight [kg]	PQ
5FSLN41000	250 L	14,8	20

## Staircase Transom quadro

Provides support for the aluminium staircase quadro or decks at ground level.

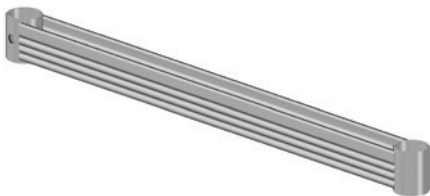
### Alu Staircase Transom quadro

for additional staircases in front of facade scaffolds



Code	Dimensions [cm]	Weight [kg]
5F00202033	73 B	3,8

### Foot Transom quadro

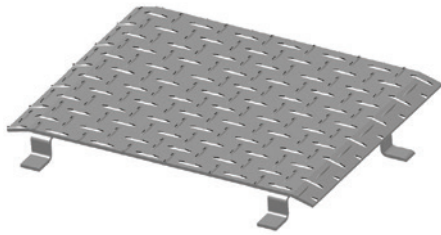


Code	Dimensions [cm]	Weight [kg]
5F00202034	73 B	2,9
5F00202035	109 B	4,1

## Gap covering

For bridging the gaps of advanced scaffolding fields.

### Gap covering



Code	Dimensions [cm]	Weight [kg]
<b>5F00207000</b> for Alu Staircase L257		1,7
<b>5F00207001</b> for Alu Staircase L307		2,9

## Couplers

### Wedge Coupler

For the connection of scaffold items with  $\varnothing$  48,3 mm.

#### Wedge Coupler, turnable



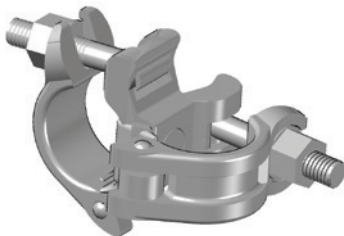
Code	Dimensions [cm]	Weight [kg]	PQ
<b>5FKUP83010</b> turnable		1,5	20 pieces/bag

## Standard Couplers

Steel, drop-forged with T-bolt and shoulder nut.

#### Normal Coupler

3rd party approved according EN 74-1 safe working load: see item



Code	Dimensions [cm]	Weight [kg]	PQ
<b>5FKUP10011</b> $\varnothing$ 48/48, 19 A/F		1,0	20 pieces/bag
<b>5FKUP10010</b> $\varnothing$ 48/48, 22 A/F		1,0	20 pieces/bag

### Swivel Coupler

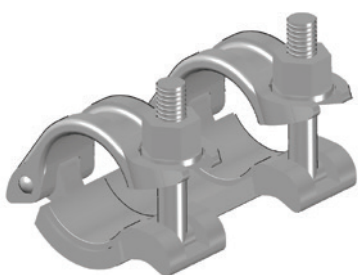
3rd party approved according EN 74-1 safe working load: see item



Code	Dimensions [cm]	Weight [kg]	PQ
<b>5FKUP20017</b> Ø 48/48, 19 A/F		1,2	20 pieces/bag
<b>5FKUP20019</b> Ø 48/48, 22 A/F		1,2	20 pieces/bag

### Tension Coupler

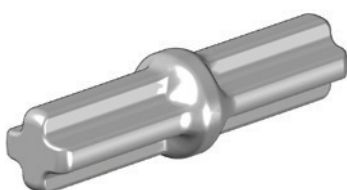
3rd party approved according EN 74-1 safe working load: 3,6 kN to be combined with tube connection spigot forged



Code	Dimensions [cm]	Weight [kg]	PQ
<b>5FKUP65002</b> Ø 48, 19 A/F		1,3	15 pieces/bag
<b>5FKUP65001</b> Ø 48, 22 A/F		1,3	15 pieces/bag

### Tube Connecting Spigot forged

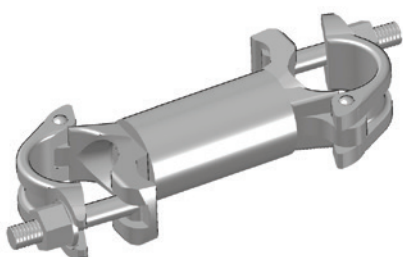
According to EN 74-3



Code	Dimensions [cm]	Weight [kg]	PQ
<b>5FDIV10001</b>		1,3	25 pieces/bag

### Distance Coupler

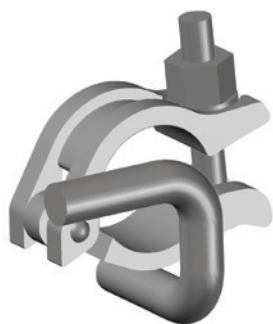
for connection of parallel scaffold tubes



Code	Dimensions [cm]	Weight [kg]	PQ
<b>5FKUP17500</b> 22 A/F	16 B	1,5	15 pieces/bag
<b>5FKUP17501</b> 22 A/F	11 B	1,3	15 pieces/bag

## Scaffold Tie Coupler

are used in connection with a tube  $\varnothing$  48,3 mm as scaffold tie



Code	Dimensions [cm]	Weight [kg]	PQ
<b>5FKUP38001</b> 19 A/F		1,0	20 pieces/bag
<b>5FKUP38000</b> 22 A/F		1,0	20 pieces/bag

## Guard Rail Coupler

Steel, drop-forged with T-bolt, shoulder nut and wedge pocket.

### Guard Rail Coupler quadro



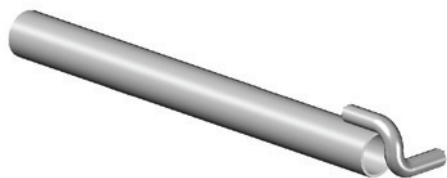
Code	Dimensions [cm]	Weight [kg]
<b>5F00202312</b> 19 A/F		1,1

## Ties

### Scaffold Tie

Scaffolds must be tied to a solid structure in such a way as to be able to withstand forces in both directions perpendicular and parallel to the surface of the structure (tension and compression). The anchorage of the scaffold should be in accordance with the methods described in the manufacturers guides for the erection and use of the scaffold as well as any local or national requirements issued by Health and Safety Executives. Requirements per tying-in point are: One clearance tie with double coupler or one scaffold tie with two double couplers.

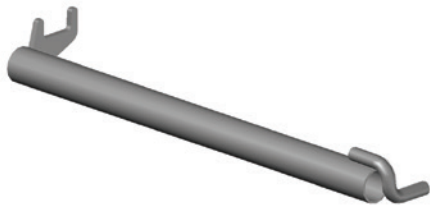
### Scaffold Tie



Code	Dimensions [cm]	Weight [kg]	PQ
<b>5FSNN24009</b>	30 L	1,3	100
<b>5FSNN24010</b>	50 L	1,9	100
<b>5FSNN24005</b>	80 L	2,9	100
<b>5FSNN24000</b>	110 L	3,9	100
<b>5FSNN24002</b>	150 L	5,2	100



## Clearance Tie



Code	Dimensions [cm]	Weight [kg]
5F00202407	65 L	3,0

## Eyebolt

12 mm Ø, steel, wood screw thread, galvanised, welded eye.

## Eyebolt



Code	Dimensions [mm]	Weight [kg]	PQ
5FDIV00106	95 L	0,1	100
5FDIV00107	120 L	0,2	100
5FDIV00108	160 L	0,2	100
5FDIV00109	190 L	0,3	100
5FDIV00110	230 L	0,3	100
5FDIV00111	350 L	0,4	100

## Expansion Anchor

Plastic, for eye bolts with wood screw thread. 12 mm fits 14 mm Ø drilled hole.

## Expansion Anchor



Code	Dimensions [mm]	Weight [kg]	PQ
5FDIV00105	70 L		100
5FDIV00149	100 L		100
5FDIV00150	130 L		100

## Plastic Cap

To cover 14 mm Ø drilled holes.

### Plastic Cap



Code	Dimensions [cm]	Weight [kg]	PQ
<b>5FDIV00104</b> for drilled holes Ø 14 mm			1.000

## Accessories

### Spindle w. Coupler

Enables scaffold extensions to be levelled out, e.g. on top of a lattice girder.

### Spindle w. Coupler



Code	Dimensions [cm]	Weight [kg]
<b>5FSOG16501</b> 19 A/F	50 H	2,9
<b>5FSOG16500</b> 22 A/F	50 H	2,9

### Castor

To insert into scaffolding tubes. 200 mm Ø wheel, spindle travel 45 cm, load capacity 11,9 kN. The outer ring allows quick height adjustment of the mobile scaffold. The wing nuts allow the castors to be securely attached to holes in the frame or modular component. It contains an additional wing bolt to secure the complete castor to standards or frames. Independent scaffolds equipped with castors have to be designed in compliance with local regulations. Brakes enable locking of independent scaffold.

### Castor 11.9 kN

with spindle, adjustable height 45 cm, castor Ø 200 mm with brake, load capacity 11,9 kN centre point load



Code	Dimensions [cm]	Weight [kg]	PQ
<b>5FSOG84000</b>		8,4	40

## Pig Tail Pin

9 mm Ø, steel, galvanised. Protection against lift-off.

### Pig Tail Pin



Code	Dimensions [cm]	Weight [kg]
5FBIE00805		0,1

## Scaffold Canvas

To cover scaffolds for environmental protection against dust and dirt as well as weather protection canvas are used. A variety of items are available in different types and dimensions. The scaffold has to be covered at the ends up to the building. It has to be anchored in accordance with the local health and safety regulations and the guidelines for erection and use.

### Scaffold Canvas 2,60

edge with eyelets, transparent white, approx.160 g/m<sup>2</sup>, tensile strength approx. 650 N/5 cm



Code	Dimensions [cm]	Weight [kg]
5FPLA01700	260 B x 1000 L	6,0
5FPLA01701	260 B x 2000 L	12,0

### Scaffold Canvas 3,10

edge with eyelets, transparent white, approx.160 g/m<sup>2</sup>, tensile strength approx. 650 N/5 cm



Code	Dimensions [cm]	Weight [kg]
5FPLA01702	310 B x 1000 L	7,0
5FPLA01703	310 B x 2000 L	14,0

## Nets

To cover scaffolds for environmental protection against dust and dirt as well as weather protection nets are used. A variety of items are available in different types and dimensions. The scaffold has to be covered at the ends up to the building. It has to be anchored in accordance with the local health and safety regulations and the guidelines for erection and use.

### Scaffold Net 2,50

for scaffold bays 250 cm, edge with eyelets, approx. 70 g/m<sup>2</sup>, wind passage ability approx. 70 %



Code	Dimensions [cm]	Weight [kg]
5FPLA02006	250 B x 1000 L	1,9
5FPLA02007	250 B x 2000 L	3,6

### Scaffold Net 3,00

for scaffold bays 300 cm, edge with eyelets, approx. 70 g/m<sup>2</sup>, wind passage ability approx. 70 %



Code	Dimensions [cm]	Weight [kg]
5FPLA02004	300 B x 1000 L	2,2
5FPLA02005	300 B x 2000 L	4,3

### One Way Plastic Tie

per 100 pieces 0,50 kg, tensile strength approx. 22,00 kg



Code	Dimensions [cm]	Weight [kg]	PQ
5FPLA02106			100

## Ratchet Spanner

Solid design with aluminium handle. Steel head with reverse lever for left-hand or right-hand motion. In different designs available.

### Ratchet Spanner



Code	Dimensions [cm]	Weight [kg]
<b>5FSLÜ00200</b> for 19 A/F	30 L	0,8
<b>5FSLÜ00202</b> for 22 A/F	30 L	0,8
<b>5FSLÜ00201</b> for 19 A/F and 22 A/F	30 L	1,0

## Scaffold Tubes

Scaffold tubes can be supplied in a choice of either steel or aluminium. Ø 48,3 mm.

### Steel Scaffold Tube wall thickness 3,2 mm



Code	Dimensions [cm]	Weight [kg]	PQ
<b>5FRDR00014</b>	100 L	3,8	61
<b>5FRDR00016</b>	200 L	7,5	61
<b>5FRDR00018</b>	300 L	11,3	61
<b>5FRDR00020</b>	400 L	15,1	61
<b>5FRDR00022</b>	500 L	18,9	61
<b>5FRDR00024</b>	600 L	22,6	61

### Alu Scaffold Tube wall thickness 4,0 mm



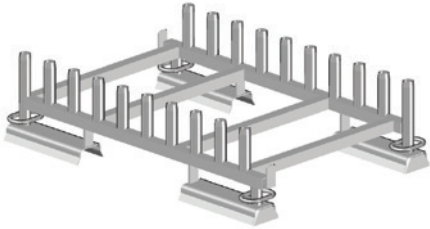
Code	Dimensions [cm]	Weight [kg]	PQ
<b>5FRDR00028</b>	100 L	1,5	61
<b>5FRDR00030</b>	200 L	3,0	61
<b>5FRDR00032</b>	300 L	4,5	61
<b>5FRDR00034</b>	400 L	6,0	61
<b>5FRDR00036</b>	500 L	7,5	61
<b>5FRDR00027</b>	600 L	9,0	61

## Stacking Pallets

A selection of different types of pallets is available for space saving storage at site or in the depot. Designed with attention to the dimensions of the most important system components usage of available space is guaranteed. Also suitable for transport, erection and inventory purposes. All pallets have been designed for fork-lift transport.

### Pallet for Vertical Frames

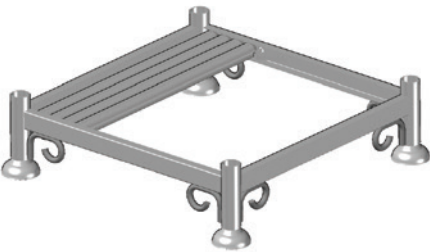
for 20 vertical frames standing upright



Code	Dimensions [cm]	Weight [kg]
<b>5FSL718500</b> for Vertical Frame 70	74 B x 119 L	38,9
<b>5FSL118500</b> for Vertical Frame 100	110 B x 119 L	43,9

### Pallet for Tubes 85x85

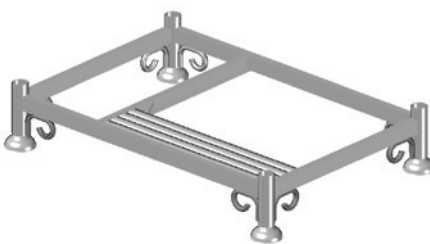
with 4 removable posts, load capacity 1.100 kg



Code	Dimensions [cm]	Weight [kg]
<b>5FSOG11501</b>	27 H x 85 B x 85 L	31,6

### Pallet for Tubes 125x85

with 4 removable posts, load capacity 1.600 kg



Code	Dimensions [cm]	Weight [kg]
<b>5FSOG11500</b>	27 H x 85 B x 125 L	38,6

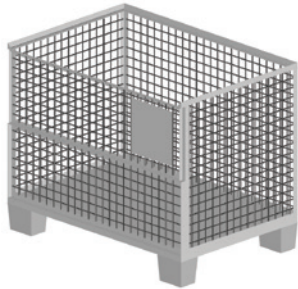
### Pallet for Tubes 110x60

with welded on rectangular posts, load capacity 6.500 kg



Code	Dimensions [cm]	Weight [kg]
<b>5FSOG69500</b>	93 H x 60 B x 110 L	42,1

### Euro Crate



Code	Dimensions [cm]	Weight [kg]
<b>5FDIV00120</b>	100 H x 80 B x 120 L	85,0

## Safety at work

### Advanced Guard Rail

Suitable for every common fascade-and modular scaffolding systems (Ø48 mm); can be assembled from the top floor as well as from the lower floor.

### Advanced Guard Rail Post

Aluminium



Code	Dimensions [cm]	Weight [kg]
<b>5F00206600</b>		5,8

## Telescopic Guard Rail

Aluminium



Code	Dimensions [cm]	Weight [kg]
<b>5F00206800</b>		2,5
for advanced guard rail 207. Bay length 1,50 m - 2,07 m		
<b>5F00206700</b>		3,0
for advanced guard rail 307. Bay length 2,00 m - 3,07 m		

## PSA-Premium-Set

„(Producer Miller) according to DIN EN 361, available in two sizes; Set existing of:“

### Personal Protective Equipment

safety harness “R” Manyard Edge short absorber, hardware bag



Code	Dimensions [cm]	Weight [kg]
<b>5SDIV70502</b>		5,5
Size S/M		
<b>5SDIV70503</b>		5,5
Size L/XL		

## Side Bracket quadro for Advanced Guard Rail

Easy assembling by hung up in corner plates. The system is completed with the standard aluminium guard rail post as well as the guard rails Attention should be paid to the assembly instructions.

### Side Bracket qu for Advanced Guard Rail



Code	Dimensions [cm]	Weight [kg]
<b>5FA1021800</b>		3,3











ALTRAD plettac assco GmbH · Postfach 52 42 · D-58829 Plettenberg  
Tel. +49 2391 815-01 · Fax +49 2391 815-343 · [info@plettac-assco.de](mailto:info@plettac-assco.de)  
[www.plettac-assco.de](http://www.plettac-assco.de)